



COMPETITIVE PRICING

AWARD WINNING TECHNOLOGY

FIRST CLASS CUSTOMER SERVICE



EXPERIENCED TECHNICAL SUPPORT

PERFORMANCE GUARANTEE

SUPERIOR QUALITY

WITH OUR PRODUCTS ON PRESS, YOU CAN PRESS ON™

FOLLOW US ON



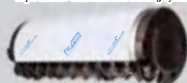
2019 PRODUCT CATALOG

GLASS BEAD

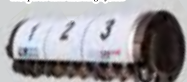
PRI Signature SERIES

PRI Originals

SUPER SEE Smooth™
Super Smooth Glass Bead Anti-Marking Cylinder Cover



SUPER ZONE®
A Superior Anti-Marking System



BLUE GLASS®
anti-marking films



METAL/CERAMIC

PRI TITAN™ ICS & PRI REFINED™ ICS

Impression Cylinder Shells



NETS

PRI Signature SERIES

PRI Originals

SUPER BLUE 2 LT®
Pre-assembled, pre-adjusted Net & Base Cover Kits



SUPER BLUE 2®
anti-marking, anti-static systems

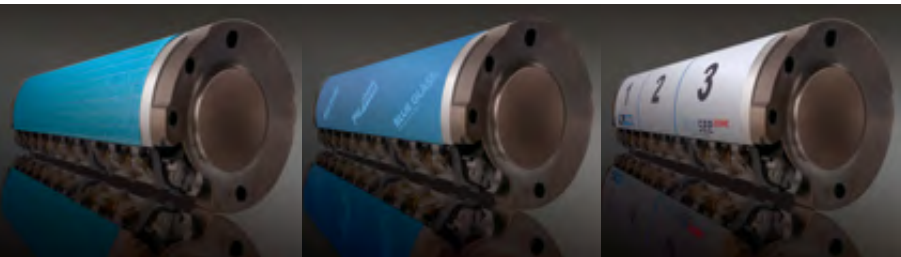
Original with Stripes

Flat StripeNet



Stretchable

Pre-stretched



Contents

Introduction.....	03
Product Guide.....	04
TITAN & REFINED Impression Cylinder Shells.....	06
SUPER SEE ZONE Glass Bead Film.....	08
BLUE GLASS Glass Bead Film.....	10
SUPER SEE SMOOTH Glass Bead Film.....	12
SUPER BLUE 2 Original with Stripes.....	14
SUPER BLUE 2 StripeNet.....	16
SUPER BLUE 2 Transfer Kits.....	18
SUPER BLUE 2 LT.....	20
Accessories.....	22
Press Guide.....	24



Printing Research, Inc. Anti-Marking Solutions



Transporting a sheet of paper with freshly printed wet ink without marking or smearing the wet ink, has been a challenge for Printers since the days of Gutenberg. As sheetfed offset printing presses progressed to more colors and much higher speeds, marking became even more challenging. An Anti-Marking solution had to be found.

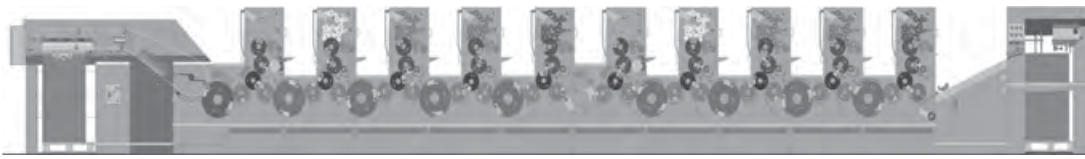
Printing Research, Inc. was founded in 1968 and has been dedicated to the Anti-Marking segment of the offset printing industry. Our first Anti-Marking patent was issued in 1974. The industry standard Super Blue Anti-Marking System was patented in 1982, won the GATF Intertech Award in 1984, and became standard OEM equipment for Heidelberg worldwide in 1985.

PRI has since developed the most complete range of Anti-Marking systems available in the industry. We have been issued some 300 patents and include our current product lineup of Super Blue 2 Original, Super Blue 2 FlatNet, Blue Glass & Super See Smooth Anti-Marking Film, and our time-saving Super See Zone Anti-Marking System designed for today's highly automated presses. We have an Anti-Marking System for models from every Press Manufacturer.

We continue to use our decades of experience and achievements to design and test new and helpful technologies for the printing industry. Our focus is to provide time, money, and materials savings to Printing Companies worldwide. Whether you are in America, Europe, or Asia the challenge to minimize costs and maximize profits is a constant.

PRI Anti-Marking Systems provide tested and proven solutions to the age-old problem of marking on a printing press. This increases your productivity and profitability.

We are so confident in our systems that we guarantee their performance in writing.

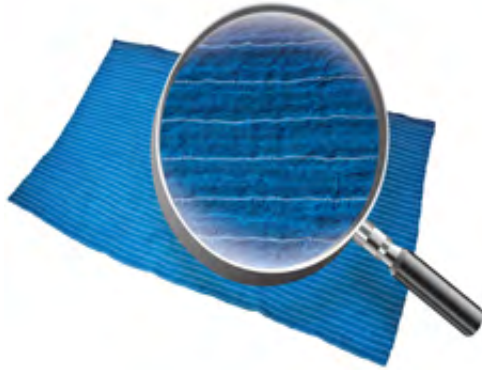


Net Technology

Super Blue 2® anti-marking systems

Super Blue 2 Original with Stripes

- Stretchable, flexible Net
- Alignment stripes
- Ink & water repellent
- Quick installation



The invention of Super Blue Nets rests on the basic idea that as wet ink on a sheet of paper comes into contact with the transfer cylinder, the ink and water repellent Super Blue Net would cushion and allow the sheet to move along with the Net, protecting it from any marking or smearing.

Super Blue 2 StripeNet

- Precision cut for your press
- No trimming or readjusting
- Smooth surface – no wrinkles
- Fastest Net installation

Super Blue Nets work at high press speeds and on heavy coverage print jobs.

Super Blue 2 Original Nets are a stretchy, pliable material that allows a pressman to install and trim the Net to the desired size for his printing press. It has alignment stripes that assist with a precise installation.

Super Blue 2 StripeNets are pre-stretched and do not require any trimming by the pressman. They are precisely cut to the specific format for your press and also have alignment stripes for an accurate and extremely fast installation.

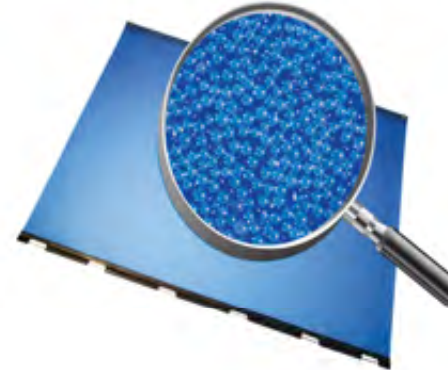
All Super Blue Net material is free of defects that might cause an uneven surface and are specially treated to repel both ink and water.

Glass Bead Technology

Blue Glass® & Super See Smooth™ anti-marking systems

Blue Glass & Super SEE Smooth – Glass Bead Films

- Microscopic glass bead surface
- Specially formulated coating
- Durable, ink resistant
- Long-lasting, washable



Blue Glass and Super See Smooth are custom manufactured to the same exacting specifications to provide the very best Anti-Marking surface. The microscopic glass beads are designed to reduce the contact surface area of the freshly printed sheet to the transfer cylinder. This allows for mark-less transfer of even the most difficult coverage jobs.

Super SEE Smooth & ZONE – Glass Bead Films

- Same bead specifications as Blue Glass
- Key component in Zone System
- Available in Cut Sheets and Converted Jackets
- Heidelberg approved hardware on Converted Jackets

The distinguishing feature of our Anti-Marking films is the uniquely formulated coating process that seals the glass beads to the film and provides a Super ink resistant protective coating. This not only firmly secures the glass beads but provides for easy cleaning and incredibly long life of the product. This is in comparison to other films with a soft silicone coating that wears away quickly, resulting in excessive ink buildup and short product life.

The innovative Super See ZONE Anti-Marking System is the world's first time saving system for identifying and correcting marking issues. The ZONE system allows a pressman to quickly identify the area on the transfer cylinder where marking is occurring and easily communicate to his helper which ZONE to clean, eliminate the marking, and get back up & running quickly.

Full Range of Anti-Marking Solutions

- Stretchable
- Alignment stripes
- Trim to fit
- The "Original"



SUPER BLUE 2®
Original w/Stripes

- Precision cut
- No Trimming
- Flat, smooth surface
- Fast & Easy installation



SUPER BLUE 2®
StripeNet

- LT = "Less Time"
- One piece installation
- No base cover required
- Simple installation



SUPER BLUE 2®
LT = Less Time™

- Glass beaded surface
- Uniquely formulated coating
- Washable – very long-lasting
- All press models



BLUE GLASS®

- Glass beaded surface
- Uniquely formulated coating
- Washable – very long-lasting
- All press models



SUPER SEE
SMOOTH™

- Time Saving Anti-Marking System
- Extended overall life
- Uniquely formulated coating
- All press models



SUPER SEE
ZONE®

IMPRESSION CYLINDER SHELLS FOR PERFECTING PRESSES

PRI[®]
TITAN[™] ICS

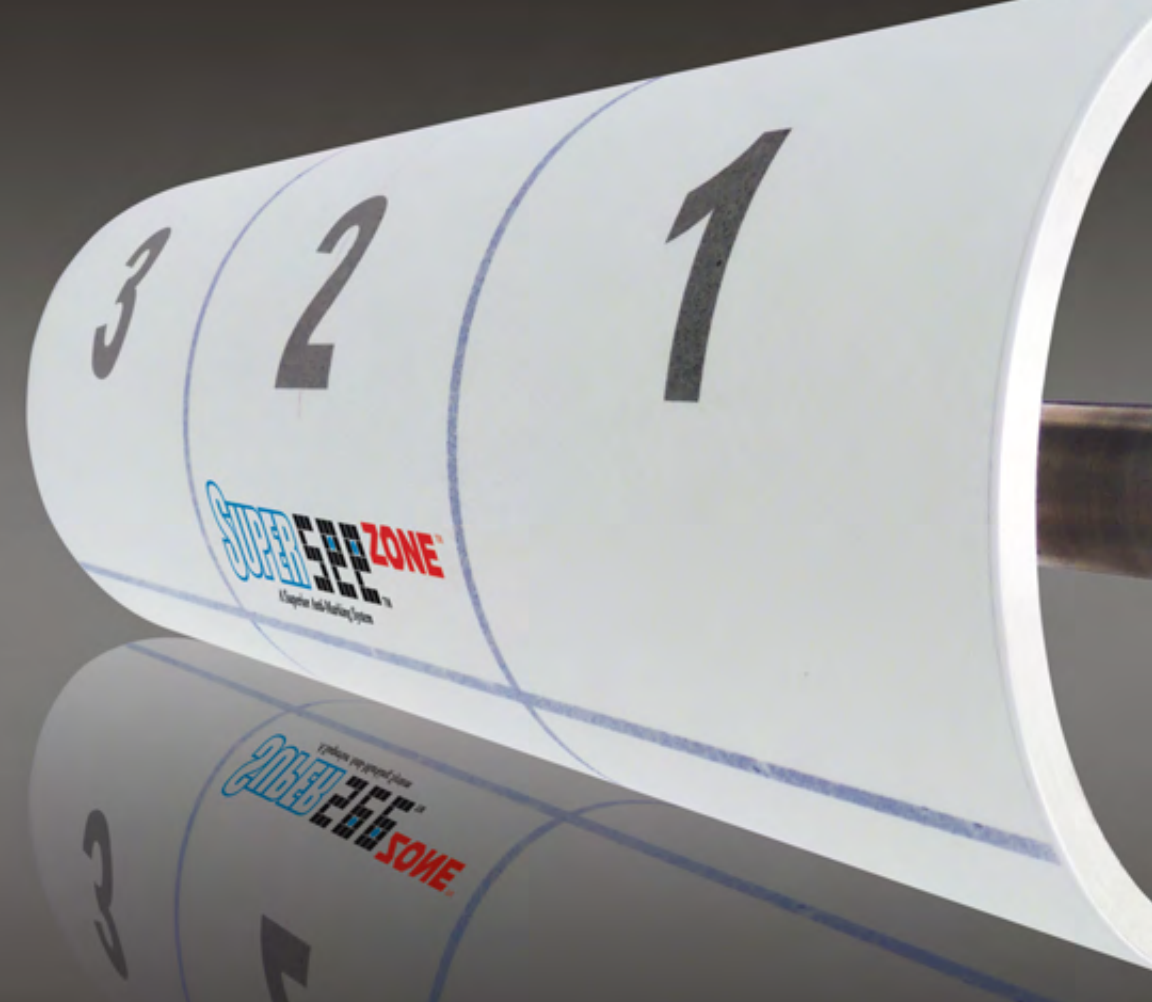
PRI[®]
REFINED[™] ICS

TITAN for LONG perfecting presses and **REFINED** for SHORT perfecting presses.

- TITAN & REFINED impression cylinder shells are available for most perfecting presses
- The surface texture is calibrated to achieve the best print quality
- Our top coating is more durable and longer lasting than the competition
- Easily cleaned with press wash or MRC
- Able to withstand temperatures up to 900 degrees Fahrenheit
- Replaces OEM and Black impression cylinder jackets.

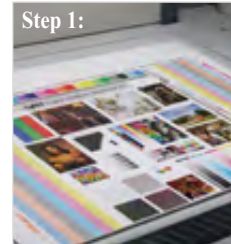
TITAN[™] & **REFINED**[™]

IMPRESSION CYLINDER SHELLS for perfecting presses



Super See ZONE

Zoned Anti-Marking Glass Bead Sheets and Jackets



Step 1: Place the printed sheet with marking on the press console or inspection table.



Step 2: Place the ZONE Overlay on top of the printed sheet.



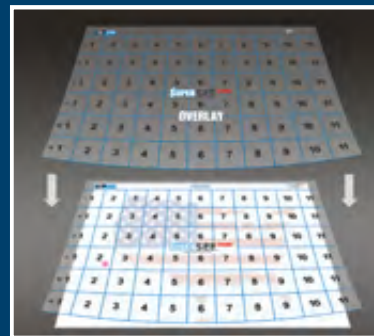
Step 3: Identify the affected ZONE where marking is occurring.



Step 4: Clean just that specific area on the Transfer Cylinder and resume normal press production.

The Super SEE ZONE is a two piece anti-marking system that consists of a high performance, long-lasting transfer cylinder jacket with a corresponding ZONE Overlay.

With the Super SEE ZONE system installed, the operator can easily identify a ZONE in need of cleaning by simply lining up the overlay with the printed sheet to determine the exact ZONE to be cleaned on the cylinder jacket vs. cleaning the entire surface of the transfer cylinder.



MAKE	MODEL PRESS SIZE	POSITION FORMAT/SIZE (in/cm)	PART NUMBER
Heidelberg	GTO 52	Transfer S/C	57LZ973102
Heidelberg	SM 52	Transfer S/C	57LZ974100
Heidelberg	MO 66	Transfer S/C	57LZ973100
Heidelberg	MO 66 Serial No. Req.	Transfer S/C	57LZ973101
Heidelberg	SM 74	Transfer S/C	57LZ973105
Heidelberg	SM 74	Delivery R/R	57LZ976107
Heidelberg	SM 74 Req. Retaining Clips *	Perfector R/R	57LZ976113
Heidelberg	SM 102 Serial No. Req.	Transfer R/S	57LZ976106
Heidelberg	SM 102 Serial No. Req.	Transfer R/R	57LZ976105
Heidelberg	SM 102 698.5 mm Circ. **	Delivery R/R	57LZ976100
Heidelberg	SM 102 762.0 mm Circ. **	Delivery R/R	57LZ976101
Heidelberg	SM 102 Post Drupa *	Perfector R/R	57LZ976017
Heidelberg	SM 102 Pre Drupa *	Perfector R/R	57LZ976009
GENERIC	18"	18" / 45.7cm	5718Z0LBNS
GENERIC	20"	20" / 50.8cm	5720Z0LBNS
GENERIC	26"	26" / 66.0cm	5726Z0LBNS
GENERIC	28"	28" / 71.1cm	5728Z0LBNS
GENERIC	29"	29" / 73.7cm	5729Z0LBNS
GENERIC	40"	40" / 101.6cm	5740Z0LBNS

*Retaining Clips not included with Perfector Jackets (For Retaining Clips see page 23)

**Measurement Required R/R = Rod to Rod R/S = Rod to Snap S/C = Snap to Clamp (For Hardware Photos see "Heidelberg" at bottom of page 24)

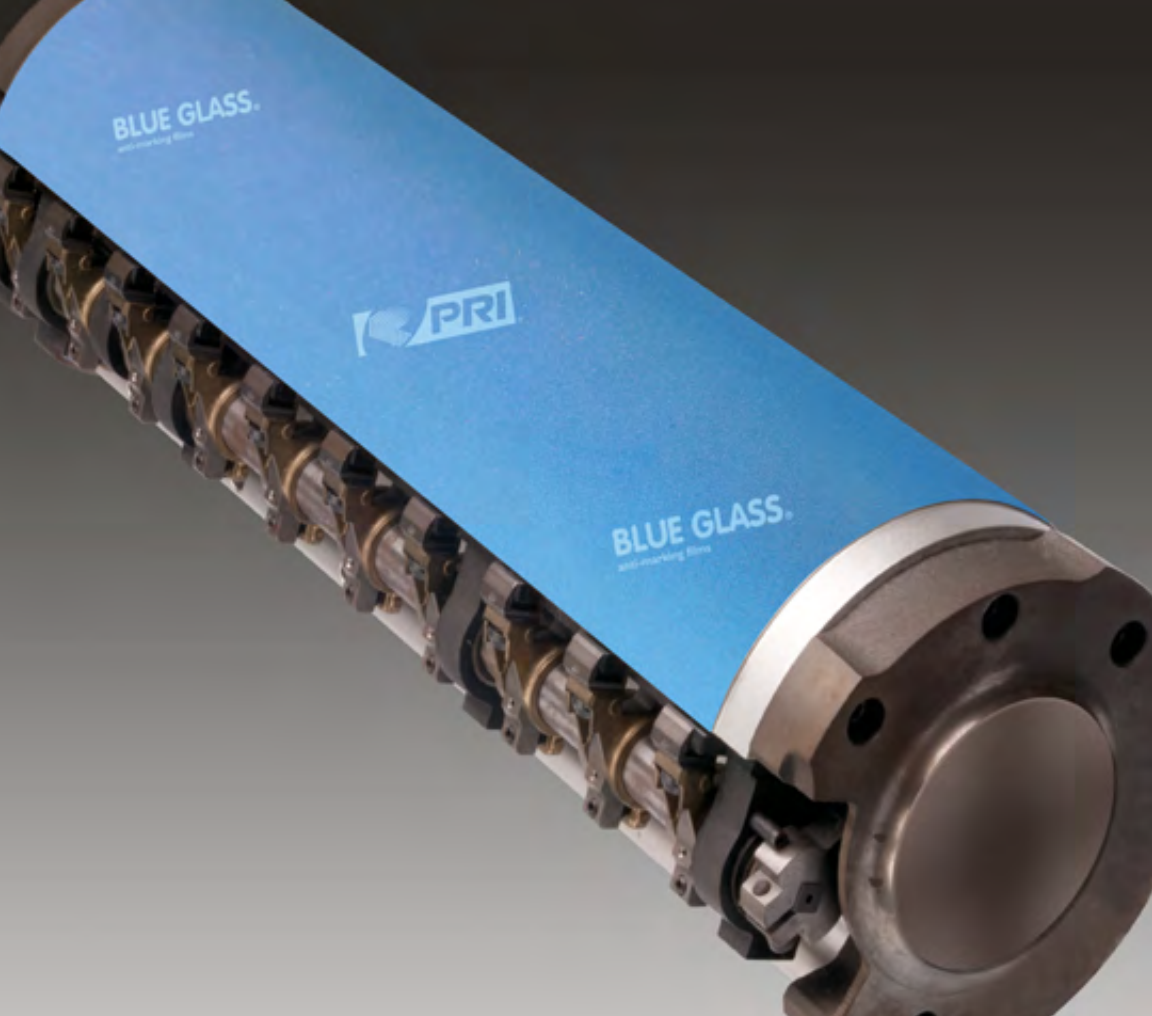
SM102 Serial No. break 520465-533536 = [rod to rod] and Serial No. > 533537 = [rod/snap]

SM74 Serial No. break > 627278 = 30.8 in width, < 627277 = 32.0 in width

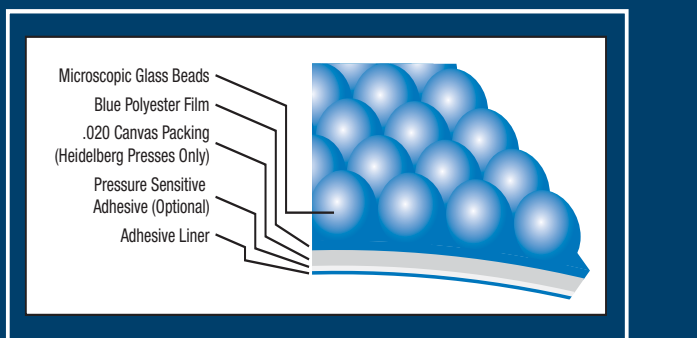


SUPER SEE ZONE®





Effective, reliable, durable, washable, low maintenance, and affordable are just a few of the qualities that have made Blue Glass anti-marking film the Pressman's Preference when choosing to replace older net based systems or expensive OEM metal transfer jackets.



Blue Glass

Anti-Marking Glass Bead Sheets and Jackets

MAKE	MODEL	POSITION	PART NUMBER
	PRESS SIZE	FORMAT/SIZE [in/cm]	
Heidelberg	GTO 52	Transfer S/C	57L0973002
Heidelberg	SM 52	Transfer S/C	57L0974000
Heidelberg	MO 66	Transfer S/C	57L0973000
Heidelberg	MO 66	Transfer S/C	57L0973001
Heidelberg	SM 74	Transfer S/C	57L0973005
Heidelberg	SM 74	Delivery R/R	57L0976007
Heidelberg	SM 74	Perfactor R/R	57L0976013
Heidelberg	SM 102	Transfer R/S	57L0976006
Heidelberg	SM 102	Transfer R/R	57L0976005
Heidelberg	SM 102	Delivery R/R	57L0976000
Heidelberg	SM 102	Delivery R/R	57L0976001
Heidelberg	SM 102	Perfactor R/R	57L0976017
Heidelberg	SM 102	Perfactor R/R	57L0976009
GENERIC	18"	18" / 45.7cm	5718BGLBNS
GENERIC	20"	20" / 50.8cm	5720BGLBNS
GENERIC	26"	26" / 66.0cm	5726BGLBNS
GENERIC	28"	28" / 71.1cm	5728BGLBNS
GENERIC	29"	29" / 73.7cm	5729BGLBNS
GENERIC	40"	40" / 101.6cm	5740BGLBNS

*Retaining Clips not included with Perfector Jackets [For Retaining Clips see page 23]

**Measurement Required R/R = Rod to Rod R/S = Rod to Snap S/C = Snap to Clamp [For Hardware Photos see "Heidelberg" at bottom of page 24]

SM102 Serial No. break 520465-533536 = [rod to rod] and Serial No. > 533537 = [rod/snap]

SM74 Serial No. break > 627278 = 30.8 in width, < 627277 = 32.0 in width



Superior Technology

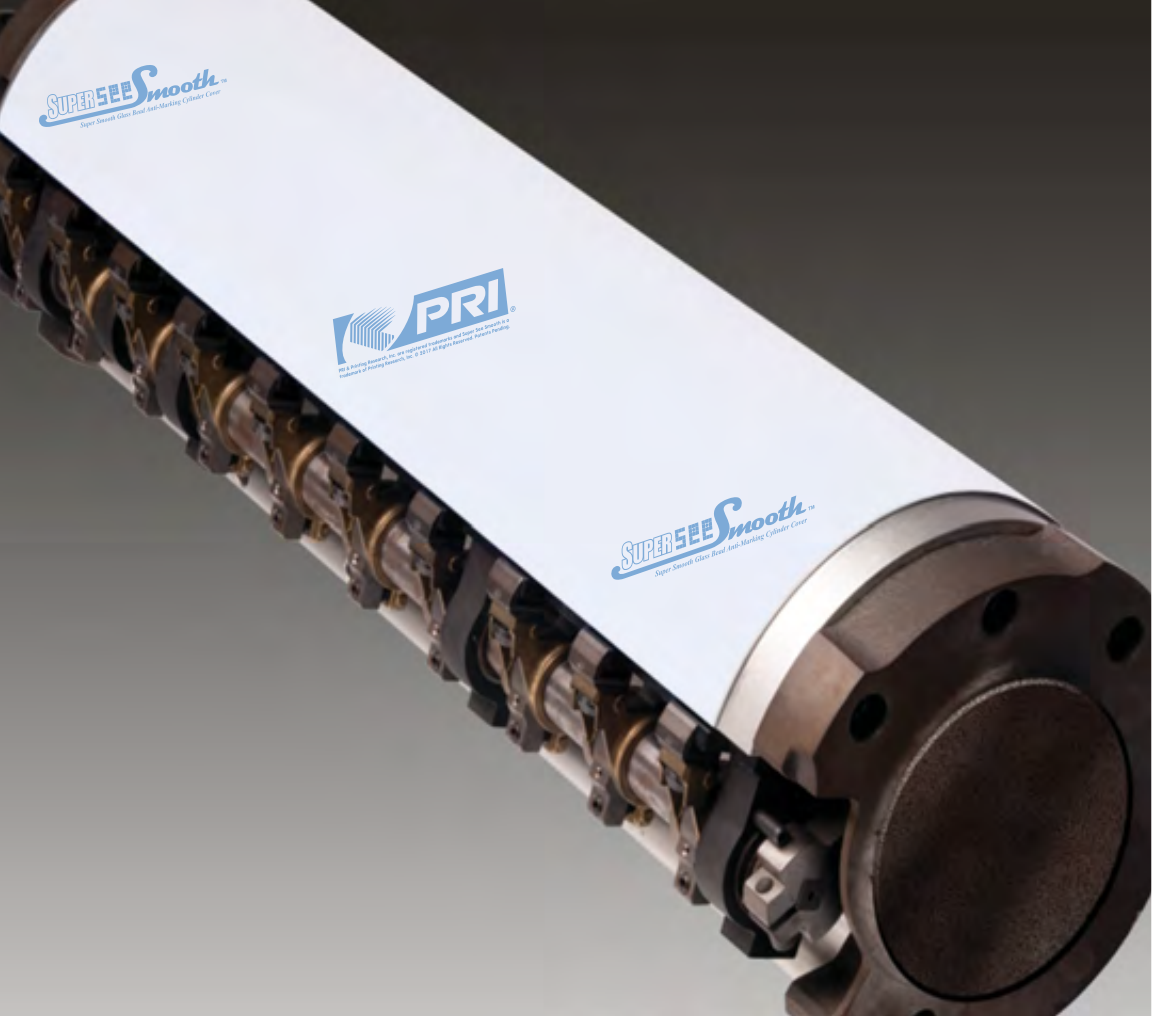
All of our anti-marking films are sealed with our own uniquely formulated coating that provides a protective outer barrier that is Super-ink, oil, water, and solvent repellent.

This results in an anti-marking film that out-performs and out-lasts any of the soft silicone coated films on the market.



BLUE GLASS®





Super See Smooth

Anti-Marking Glass Bead Sheets and Jackets

MAKE	MODEL	POSITION	PART NUMBER
	PRESS SIZE	FORMAT/SIZE (in/cm)	
Heidelberg	GTO 52	Transfer S/C	57SS973102
Heidelberg	SM 52	Transfer S/C	57SS974100
Heidelberg	MO 66 Serial No. Req.	Transfer S/C	57SS973100
Heidelberg	MO 66 Serial No. Req.	Transfer S/C	57SS973101
Heidelberg	SM 74	Transfer S/C	57SS973105
Heidelberg	SM 74	Delivery R/R	57SS976107
Heidelberg	SM 74 Req. Retaining Clips *	Perfector R/R	57SS976113
Heidelberg	SM 102 Serial No. Req.	Transfer R/S	57SS976106
Heidelberg	SM 102 Serial No. Req.	Transfer R/R	57SS976105
Heidelberg	SM 102 698.5 mm Circ. **	Delivery R/R	57SS976100
Heidelberg	SM 102 762.0 mm Circ. **	Delivery R/R	57SS976101
Heidelberg	SM 102 Post Drupa *	Perfector R/R	57SS976117
Heidelberg	SM 102 Pre Drupa *	Perfector R/R	57SS976109
GENERIC	18"	18" / 45.7cm	5718SSLBNS
GENERIC	20"	20" / 50.8cm	5720SSLBNS
GENERIC	26"	26" / 66.0cm	5726SSLBNS
GENERIC	28"	28" / 71.1cm	5728SSLBNS
GENERIC	29"	29" / 73.7cm	5729SSLBNS
GENERIC	40"	40" / 101.6cm	5740SSLBNS

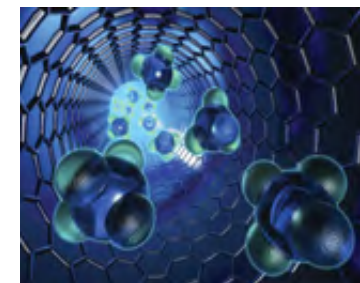
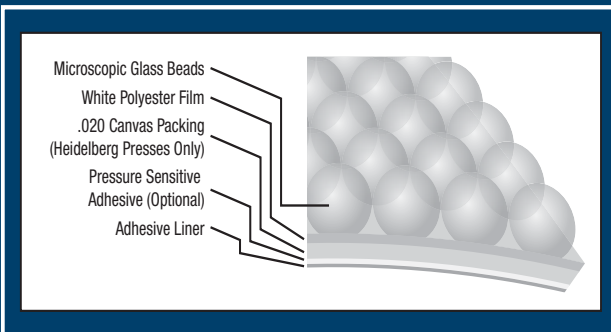
*Retaining Clips not included with Perfector Jackets (For Retaining Clips see page 23)

**Measurement Required R/R = Rod to Rod R/S = Rod to Snap S/C = Snap to Clamp (For Hardware Photos see "Heidelberg" at bottom of page 24)

SM102 Serial No. break 520465-533536 = (rod to rod) and Serial No. > 533537 = (rod/snap)

SM74 Serial No. break > 627278 = 30.8 in width, < 627277 = 32.0 in width

The uniform surface of SUPER SEE SMOOTH anti-marking film provides even support across the entire substrate. The film is remarkably flexible and will maintain bead adhesion even under the most intense conditions. Our proprietary coating is tougher & longer lasting than silicone coated anti-marking films.



Superior Technology

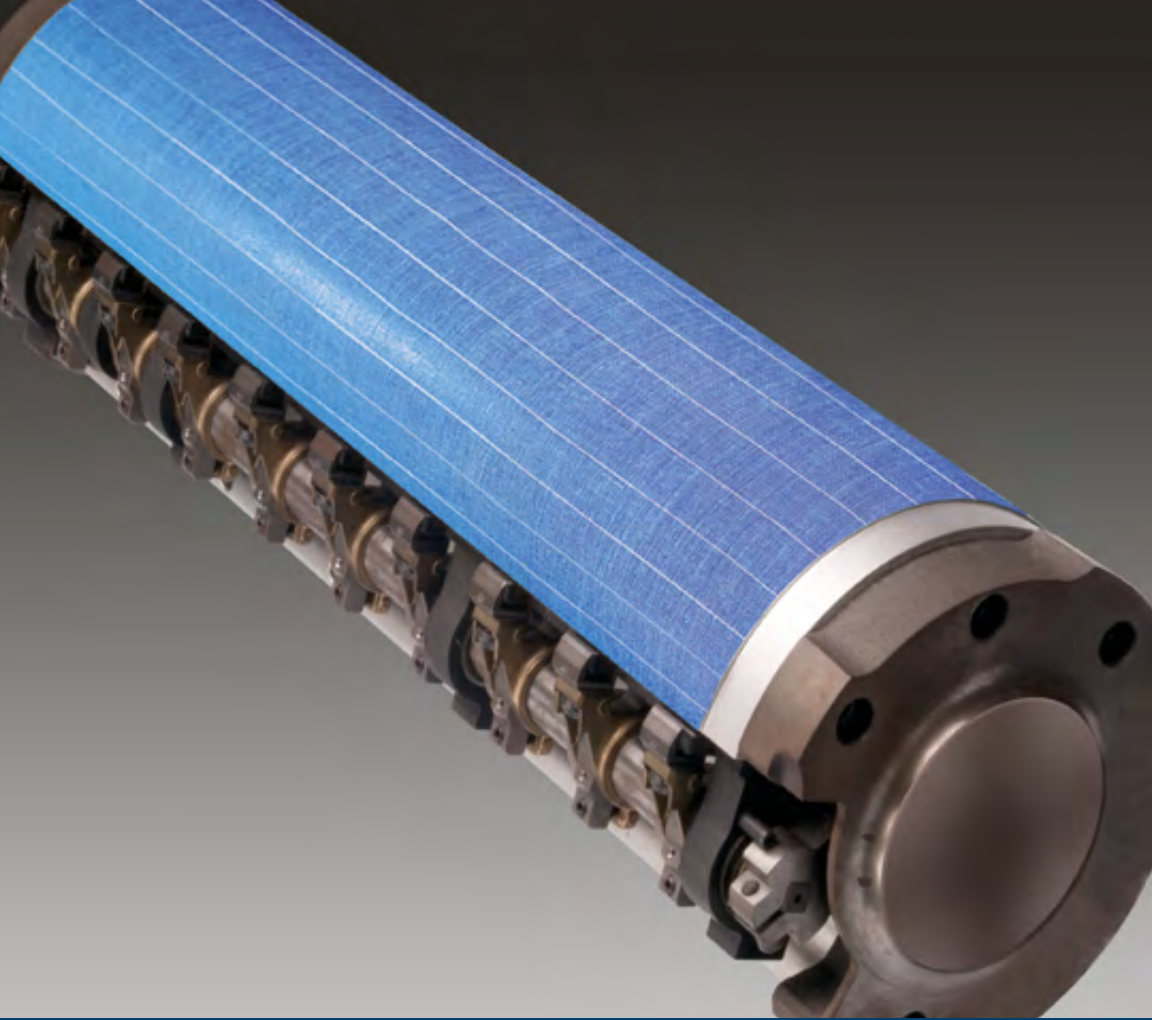
All of our anti-marking films are sealed with our own uniquely formulated coating that provides a protective outer barrier that is Super-ink, oil, water, and solvent repellent.

This results in an anti-marking film that out-performs and out-lasts any of the soft silicone coated films on the market.

PRI
Signature
SERIES

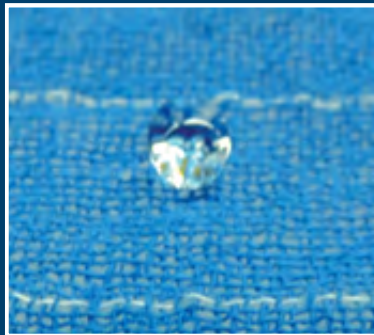
SUPER SEE SMOOTH™





The Super Blue 2 Original with Stripes anti-marking nets are a chemically treated stretchable fabric with a soft wrinkle surface. At regular intervals there is a white thread woven into the fabric that aids in the installation and alignment of the net.

Available in generic sizes for all press models and sizes.



Super Blue 2 "Original with Stripes" Anti-Marking Replacement Nets

PRESS FORMAT IN / CM	NET SIZE [INCHES]	NET SIZE [CENTIMETERS]	PART NUMBER
18" / 46cm	20" x 18"	50.8 x 45.7cm	XD20SBNETS
20" / 52cm	23" x 18"	58.4 x 45.7cm	XA10SBNETS
26" / 66cm	29" x 36"	73.7 x 91.4cm	XB10SBNETS
28" / 72cm	32" x 36"	81.3 x 91.4cm	XC10SBNETS
29" / 74cm	35" x 36"	88.9 x 91.4cm	XD10SBNETS
36" / 91cm	38" x 36"	96.5 x 91.4cm	XE10SBNETS
40" / 102cm	43" x 36"	109.2 x 91.4cm	XF10SBNETS
42" / 105cm	47" x 36"	119.4 x 91.4cm	XB20SBNETS
Special Size	44" x 60"	111.8 x 152.4cm	XA30SBNETS
50" / 127cm	55" x 60"	139.7 x 152.4cm	XC30SBNETS
58" / 142cm	60" x 60"	152.4 x 152.4cm	XD30SBNETS
60" / 152cm	65" x 60"	165.1 x 152.4cm	XE30SBNETS
65" / 165cm	68" x 60"	172.7 x 152.4cm	XF30SBNETS
68" / 172cm	70" x 60"	177.8 x 152.4cm	XG30SBNETS
80" / 205cm	85" x 60"	215.9 x 152.4cm	XH30SBNETS

Super Blue 2 Delivery Roller System Nets Anti-Marking Replacement Nets [Delivery Roller Systems]

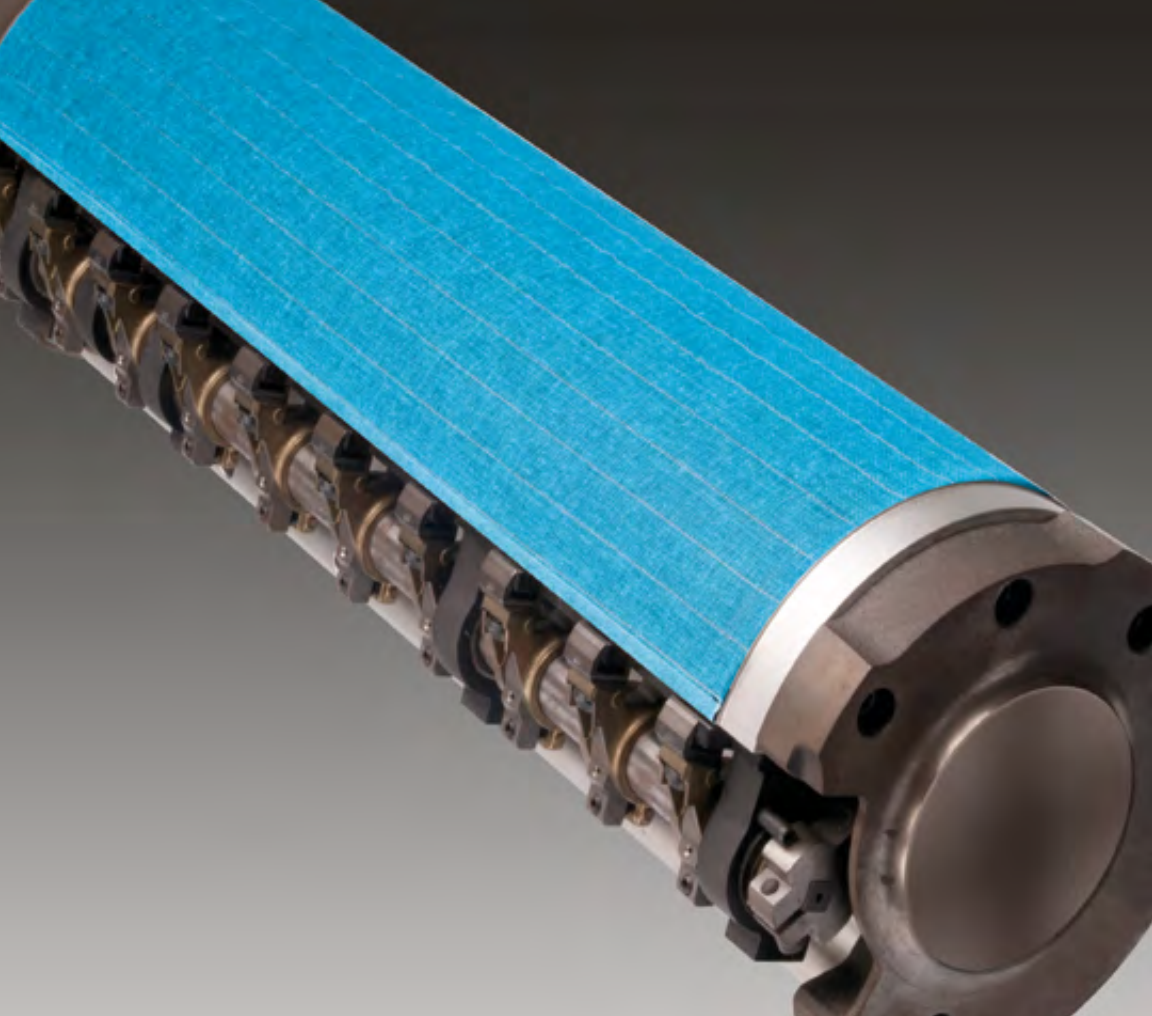
PRESS FORMAT IN / CM	NET LENGTH [INCHES]	NET LENGTH [CENTIMETERS]	PART NUMBER
Generic	15"	38.1cm	XRSD3A15NT
Generic	25"	63.5cm	XRSD3A25NT
Generic	30"	76.2cm	XRSD3A30NT
Generic	35"	88.9cm	XRSD3A35NT



SUPER BLUE 2®

Original with Stripes





Super Blue 2 "STRIPENETS"

Anti-Marking Replacement Nets

Press Model Specific **WITHOUT** Heat Set Tape Fasteners

PRESS TYPE	PRESS POSITION	PART NUMBER
Heidelberg QM 46	Delivery	XOS0142195
Heidelberg GTO 46/52	Delivery	XOS0230167
Heidelberg SM 52	Delivery	XOS0248167
Heidelberg SORK (Z)	Transfer/Delivery	XOS0275280
Heidelberg MO 66	Delivery	XOS0270207
Heidelberg SM 72	Transfer	XOS0300247
Heidelberg SM 72	Transfer	XOS0340286
Heidelberg SM 72	Delivery	XOS0300280
Heidelberg SM 74	Transfer	XOS0340226
Heidelberg SM 74	Perfector	XOS0307252
Heidelberg SM 74	Delivery	XOS0340237
Heidelberg SM 102	Transfer	XOS0425302
Heidelberg SM 102	Transfer	XOS0425320
Heidelberg SM 102	Storage Drum	XOS0430296
Heidelberg SM 102	Perfector	XOS0415310
Heidelberg SM 102	Delivery	XOS0457301
Heidelberg CD 102	Transfer	XOS0429313
Heidelberg CD 102	Transfer	XOS0425320

Press Model Specific **WITH** Heat Set Tape Fasteners

PRESS TYPE	PRESS POSITION	PART NUMBER
Heidelberg GTO52	Transfer	XHS0235170
Heidelberg GTO 52/SM 52	Transfer	X4S0227172
Heidelberg SM 52	Transfer	X3S0227168
Heidelberg MO 66	Transfer	XHS0285220
Heidelberg MO 66	Transfer	X4S0278227
Heidelberg SM 74	Transfer	XHS0340220
Heidelberg SM 74	Transfer	X2S0340226
Heidelberg SM 74	Transfer	X4S0340226
Heidelberg SM 74	Transfer	X3S0344219
Heidelberg SM 74	Transfer	X3S0319219
Komori Lithrone 26	Transfer	XHS0276213
Komori Lithrone 28	Transfer	XHS0290210
Komori Lithrone 28	Transfer	XHS0300222
Komori Spica 29	Transfer	XHS0291225
Komori Spica 29	Transfer	XHS0327240
Komori Lithrone 40	Transfer	XHS0425312
Komori Lithrone 44	Transfer	XHS0460350
Mitsubishi 29	Transfer	XHS0302240
Mitsubishi 40	Transfer	XHS0420310
Mitsubishi 52	Transfer	XHS0535407

Custom sizes with and without Heat Set Tape Fasteners manufactured at your request. Contact PRI for pricing.

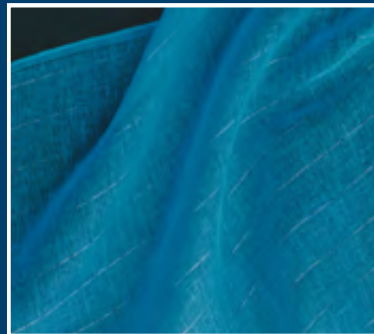
Generic Sizes (without heat set tape, except where noted)

PRESS FORMAT	NET SIZE [INCHES]	NET SIZE [CENTIMETERS]	PART NUMBER
18" / 46cm	20" x 19"	50.8 x 48.3cm	XOS0200190
20" / 52cm	23" x 20"	58.4 x 50.8cm	XOS0230200
26" / 66cm	29" x 25"	73.7 x 63.5cm	XOS0290250
28" / 72cm	34" x 28"	86.4 x 71.1cm	XOS0340280
29" / 74cm	35" x 28"	88.9 x 71.1cm	XOS0350280
36" / 91cm	38" x 32"	96.5 x 81.3cm	XOS0380320
40" / 102cm	45" x 32"	114.3 x 81.3cm	XOS0450320
42" / 105cm	47" x 32"	119.4 x 81.3cm	XOS0470320

Generic Sizes (continued)

PRESS FORMAT	NET SIZE [INCHES]	NET SIZE [CENTIMETERS]	PART NUMBER
Special Size	44" x 60"	111.8 x 152.4cm	XOS0440600
50" / 127cm	55" x 60"	139.7 x 152.4cm	XOS0550600
58" / 142cm	60" x 60"	152.4 x 152.4cm	XOS0600600
60" / 152cm	65" x 60"	165.1 x 152.4cm	XOS0650600
65" / 165cm	68" x 60"	172.7 x 152.4cm	XOS0680600
68" / 172cm	70" x 60"	177.8 x 152.4cm	XOS0700600
80" / 205cm	85" x 60"	215.9 x 152.4cm	XOS0850600

The Super Blue 2 StripeNet anti-marking nets are a chemically treated pre-stretched, wrinkle free fabric, which eliminates any re-adjusting of the net. At regular intervals there is a white thread woven into the fabric that serves as a guide for keeping the net straight during installation.

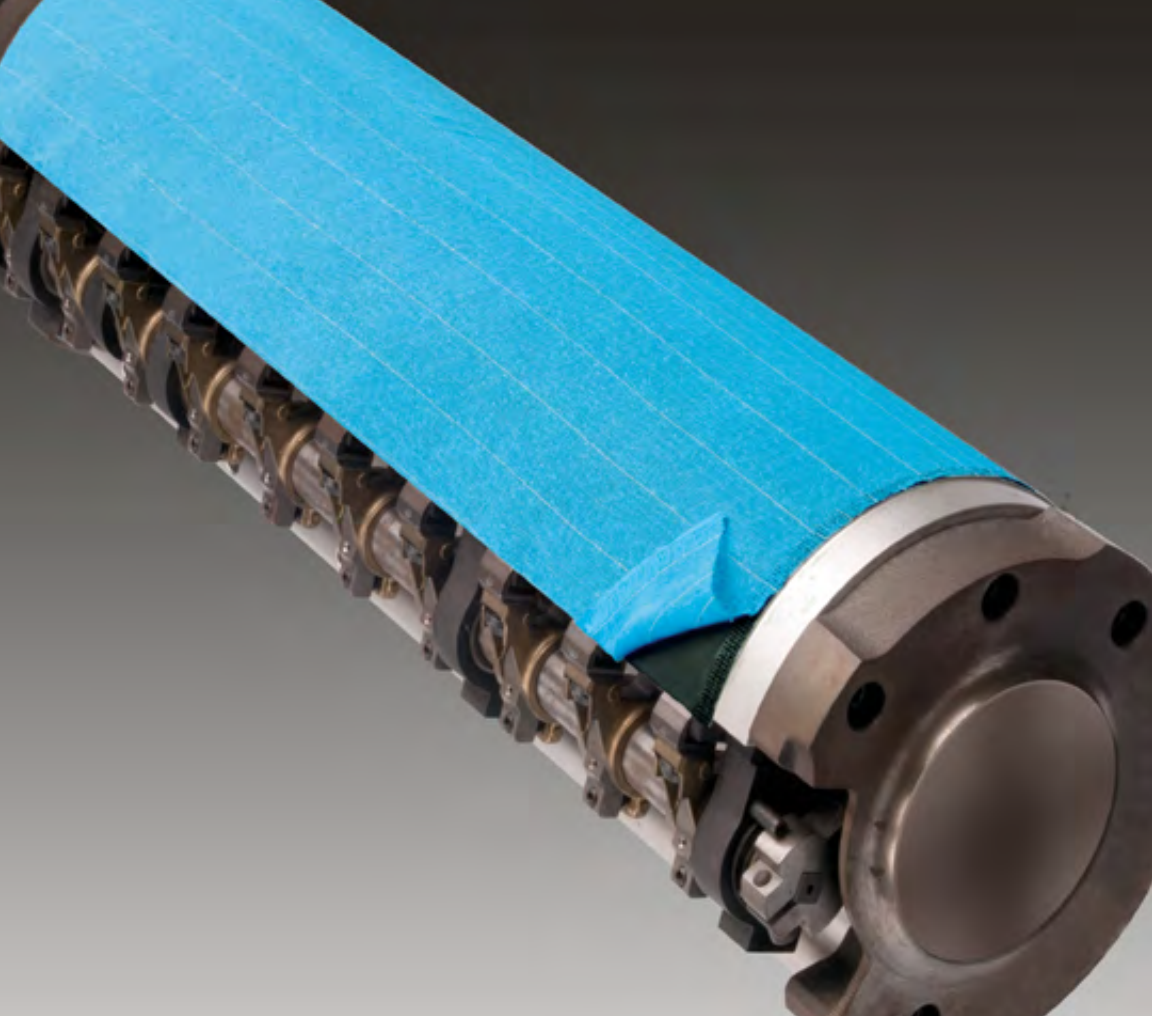


Available in generic and precision cut sizes for most press models and sizes.



SUPER BLUE 2®





Transfer Kits consist of a reusable Super Blue 2 Base Cover with a replaceable Super Blue 2 StripeNet, pre-assembled, ready to install and run. Super Blue 2 Transfer Kits are available in two forms, Converted Base Cover Jacket Kits for Heidelberg & Komori press models and Generic Base Cover "Adhesive Sheet" Kits.



Super Blue 2 Transfer Kits

Converted Base Cover Jacket Kits

All Super Blue 2 converted base cover jackets include all required items to convert each transfer cylinder

PRESS TYPE	POSITION	NOTES	PART NUMBER
Heidelberg QM 46	Delivery		HEQM46DLCC
Heidelberg GTO 46	Transfer		HE1800T2SC
Heidelberg GTO 52	Transfer		HE20N0T2SC
Heidelberg GTO 52	Perfector		HE2000P200
Heidelberg SM 52	Transfer		HE52N0T2SC
Heidelberg SM 52	Perfector		HE5200P200
Heidelberg SM 52	Delivery		HE5200D2SC
Heidelberg MO 66	Transfer	Without Packing	HE26N0T2SC
Heidelberg MO 66	Transfer	With Packing	HE26N1T2SC
Heidelberg MO 66	Perfector		HE2600P200
Heidelberg MO 66	Delivery		HE2600D2SC
Heidelberg SM 72	Transfer		HE2800T2SC
Heidelberg SM 72	Perfector		HE2800P200
Heidelberg SM 72	Delivery		HE2800D2SC
Heidelberg SM 74	Transfer	32.0" width - Standard	HE74N0T2MS
Heidelberg PM/SM 74	Transfer	30.7" width	HE74N0T2M7
Heidelberg PM/SM 74	Perfector		HE7400P200
Heidelberg PM/SM 74	Delivery		HE7400D2SC
Heidelberg SM 102	Transfer	Serial No. Req.	HE4000T2SC
Heidelberg SM 102	Transfer	Serial No. Req.	HE40N0T2SC
Heidelberg SM 102	Perfector	Serial No. Req.	HE4000P200
Heidelberg SM 102	Perfector	Serial No. Req.	HE4000P20D
Heidelberg SM 102	Delivery	Measurement Req.	HE4000D2SC
Heidelberg SM 102	Delivery	Measurement Req.	HE40N0D2SC
Komori Lithrone 26	Transfer	Includes two!!	KO26LOT2SC
Komori Lithrone 28	Transfer	Includes two!!	KO28N0T2SC
Komori Spica 29	Single Transfer		KO29SPT200
Komori Spica 29	Double Transfer		KO29SPT202
Komori Spica 29	Delivery Kit		KO29SPD200
Komori Lithrone 40	Transfer	Includes two!!	KO40LOT2SC

SM102 Serial No. break 520465-533536 = HE4000T2SC (rod to rod) and Serial No. > 533537 = HE40N0T2SC (rod/snap)
SM74 Serial No. break > 627278 = HE74N0T2M7 - 30.8 in width, < 627277 = HE74N0T2MS - 32.0 in width

Generic Adhesive Sheet Kits

Each Super Blue 2 "Adhesive Sheet Kit" includes the following: 1-Adhesive backed base cover sheet, 3-Adhesive Velcro Strips 5/8" and 1-Super Blue 2 StripeNet with Adhesive fastening strip

PRESS FORMAT	BASE COVER SIZE (IN)	BASE COVER SIZE (CM)	PART NUMBER
18" / 46cm	18" x 16"	45.7 x 40.6cm	GK18A0TD00
20" / 52cm	20" x 18"	50.8 x 45.7cm	GK20A0TD00
26" / 66cm	26" x 22"	66.0 x 55.9cm	GK26A0TD00
28" / 72cm	28" x 23"	71.1 x 58.4cm	GK28A0TD00
29" / 74cm	29" x 25"	73.7 x 63.5cm	GK29A0TD00
38" / 95cm	38" x 30"	96.5 x 76.2cm	GK38A0TD00
40" / 102cm	41" x 30"	104.1 x 76.2cm	GK40A0TD00
42" / 105cm	42" x 32"	106.7 x 91.3cm	GK42A0TD00

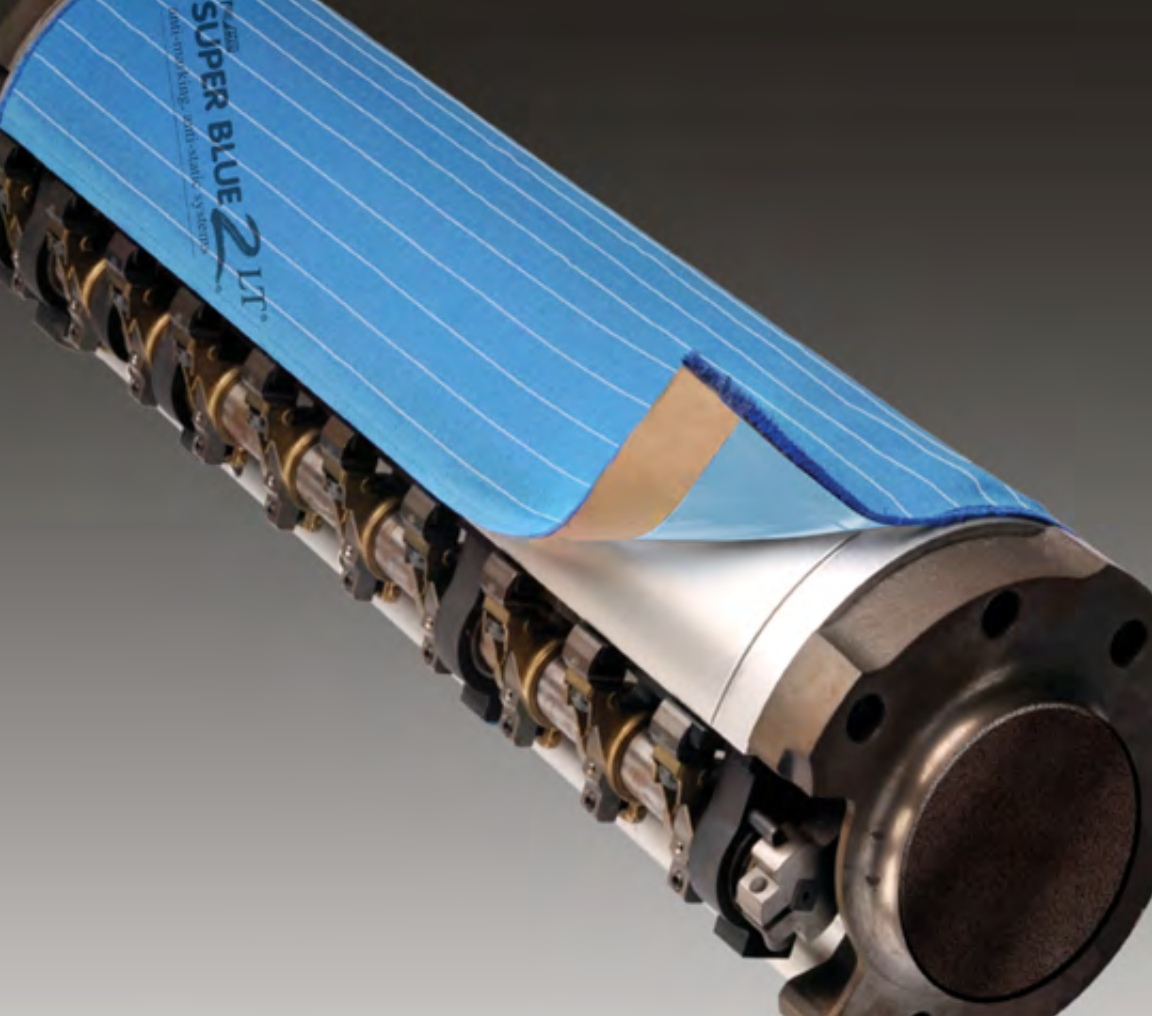
All "Sheet Kits" are sized appropriately for each press format and must be trimmed to final size required. Base cover sheets can be supplied without adhesive backing if required.



TRANSFER KITS

featuring: Super Blue 2 StripeNets

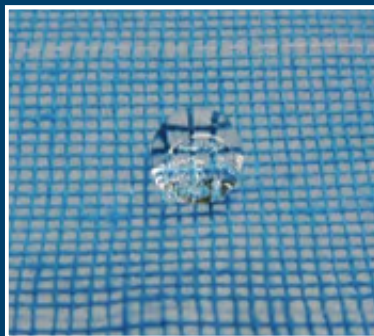




Super Blue 2 LT anti-marking systems. All the features of a SUPER BLUE 2 system in a fully integrated, disposable kit designed for today's high quality and fast paced pressroom.

Designed for any press that does not have the original Super Blue 2 base cover.

No Trimming, No Adjusting, No Base Cover, No Problem!



Super Blue 2 LT "LESS TIME" Systems

Integrated Disposable Kits

PRESS FORMAT SIZE (inches)	PRESS FORMAT SIZE (cm)
18" - 20"	46 - 52cm
25" - 26"	64 - 66cm
28"	72cm
29"	74 - 75cm
30" - 33"	76 - 83cm
36" - 38"	91 - 97cm
40" - 42"	102 - 106cm
44"	111cm
52"	132cm

PRESS MODEL	PART NUMBER
Heidelberg SM 52	HE20LTT2SC
Heidelberg SM 74	HE29LTT2SC
Heidelberg SM 102 R/R U1/U3	HE40LTT2SC
Komori Spica 29	KO29LTT2SC
Komori Lithrone 40	KO40LTT2SC
Mitsubishi 40	MB40LTT2SC
Ryobi 750P	RY75LTT2SC

Super Blue 2 LT sheets are provided as single sheets. Some press models require multiple sheets to convert each transfer cylinder. Contact Printing Research Inc. for detailed information concerning your press.

All Super Blue 2 LT sheets are installed using a specially formulated adhesive strip mounted at the gripper and tail edges except where noted.

Super Blue 2 LT Sheets are readily available for most press models including:

Adast - Komori* - Man Roland - Miller - Mitsubishi - Omsca/Aurelia - Polly - Ryobi - Sakurai
 * Some models may use existing clamping mechanisms.

**WE ALSO BUILD CUSTOM SIZES FOR ANY PRESS.
 JUST PROVIDE US WITH THE DIMENSIONS
 AND WE'LL BUILD IT FOR YOU.**



SUPER BLUE 2®



LT "LESS TIME" Systems

PERFECTOR
RETAINING CLIPS



TWO SIDED TAPES



VELCRO STRIPS



ZONE OVERLAYS



DELIVERY CYLINDERS*



NETLOCK PLUS



ORIGINAL NETLOCK



DC ROLLERS



ACCESSORIES

for PRI anti-marking systems

Super Blue Accessories

Anti-Marking Press Accessories

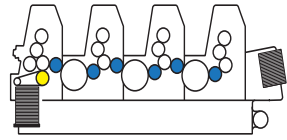
DESCRIPTION	WIDTH / LENGTH PRESS TYPE	PART NUMBER
TAPES - Glass Bead Sheets		
Mounting Tape 1/2" Wide	.500" x 60 yds / 12.7mm x 54.8m	4TAPE2S005
Mounting Tape 1" Wide	1.0" x 60 yds / 25.4mm x 54.8m	4TAPE2S010
Mounting Tape 2" Wide	2.0" x 60 yds / 50.8mm x 54.8m	4TAPE2S020
TAPES - Nets		
Double-Sided Tape 1/4" Wide	1/4" x 36 Yds. / 6.3mm x 33m	X2TESATAPE
Double-Sided Tape 1/2" Wide	1/2" x 36 Yds. / 12.7mm x 33m	X5TESATAPE
Double-Sided Tape 3/4" Wide	3/4" x 36 Yds. / 19.0mm x 33m	X7TESATAPE
TOOLS - Cleaning & Installation		
Dry Clean Roller - 2"		DWH2ROLLER
Dry Clean Replacement Roll - 2"	2" x 30 Ft. / 50.8mm x 914.4cm	DC20TAPERL
NetLock Net Tool		XNETLOCK00
NetLock Plus Tool		XNETLOCK02
Super See Zone Overlay	Specify Press Model & Cylinder Size:	57ZONECLOV
VELCRO FASTENERS - Nets		
Velcro - Black (Hook-Male)	3/8" x 30" / 9.5mm x 763mm	XBLKSSTRP3
Velcro - Black (Hook-Male)	3/8" x 40" / 9.5mm x 1016mm	XBLKMSTRP3
Velcro - Black (Hook-Male)	3/8" x 50" / 9.5mm x 1270mm	XBLKLSTRP3
Velcro - Black (Hook-Male)	3/8" x 85" / 9.5mm x 2159mm	XBLKXSTRP3
Velcro - Black (Hook-Male)	5/8" x 30" / 16.0mm x 763mm	XBLKSSTRP5
Velcro - Black (Hook-Male)	5/8" x 40" / 16.0mm x 1016mm	XBLKMSTRP5
Velcro - Black (Hook-Male)	5/8" x 50" / 16.0mm x 1270mm	XBLKLSTRP5
Velcro - Black (Hook-Male)	5/8" x 85" / 16.0mm x 2159mm	XBLKXSTRP5
Velcro - Blue (Loop-Female)	5/8" x 30" / 16.0mm x 763mm	XBLUSSTRP5
Velcro - Blue (Loop-Female)	5/8" x 40" / 16.0mm x 1016mm	XBLUMSTRP5
Velcro - Blue (Loop-Female)	5/8" x 50" / 16.0mm x 1270mm	XBLULSTRP5
Velcro - Blue (Loop-Female)	5/8" x 85" / 16.0mm x 2159mm	XBLUXSTRP5
Velcro - Black (Hook-Male)	3/8" x 25 Yds. / 9.5mm x 23m	XBLKROLLV3
Velcro - Black (Hook-Male)	5/8" x 25 Yds. / 16.0mm x 23m	XBLKROLLV5
Velcro - Blue (Loop-Female)	5/8" x 50 Yds. / 16.0mm x 46m	XBLUROLL50
WEATHER STRIPPING / STRETCH BANDS / PACKING		
Weather-stripping Soft	1/4" x 1/8" x 8' / 6.35mm x 3.18mm x 2.44m	XSOFTGRYWS
Weather-stripping Hard	1/4" x 1/4" x 25' / 6.35mm x 6.35mm x 7.62m	XHARDBLKWS
Stretch Band	Specify Size	XSTRCHBAND
Packing for SB2 MO 26"	.063" x 25.25" x 19.63" / 1.6 x 641.4 x 498.5mm	XHE6600PAK
Packing for SB2 SM 29"	.010" x 28" x 18" / 0.25 x 711.2 x 457.2mm	XHE7400PAK
Packing for SB2 SM 40"	.010" x 40" x 26.7" / 0.25 x 1016 x 678.18mm	XHE1020PAK
RETAINING CLIPS - Heidelberg Perfector Cylinders		
Retaining Clips	GTO 52 Perfector	XHE200CLIP
Retaining Clips	SM 52 Perfector	XHE520CLIP
Retaining Clips	MO 66 Perfector	XHE260CLIP
Retaining Clips	SM 72 Perfector	XHE280CLIP
Retaining Clips	SM 74 Perfector	XHE740CLIP
Retaining Clips	SM 102 Perfector	XHE400CLIP
Retaining Clips	SM 102 Perfector	XHE40DCLIP

*For Delivery Cylinder information and pricing, please contact PRI with specific press details.

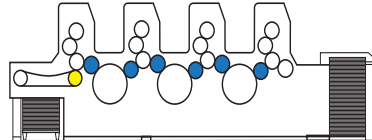
Press Cylinder Configurations

Anti-Marking needs for your specific press model

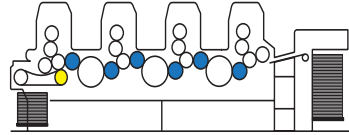
Heidelberg GTO46/52



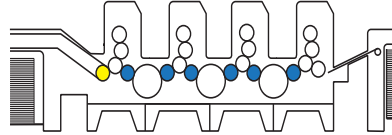
Heidelberg Speedmaster 52



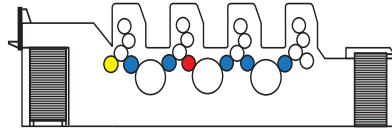
Heidelberg M-Offset



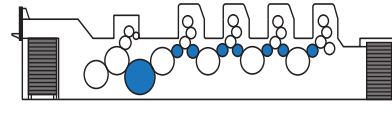
Heidelberg Speedmaster 72



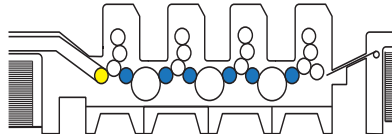
Heidelberg Speedmaster 74 P



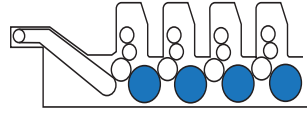
Heidelberg Speedmaster 74+L



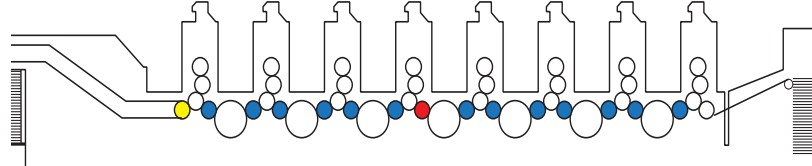
Heidelberg Speedmaster 102



Heidelberg Speedmaster CD



Heidelberg Speedmaster 102 8 P



● Transfer ● Delivery ● Perfector ● Double Transfer (Requires TWO Jackets per cylinder)

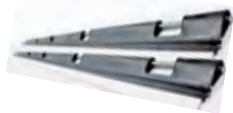
Heidelberg Approved Hardware

Different hardware types for Heidelberg presses

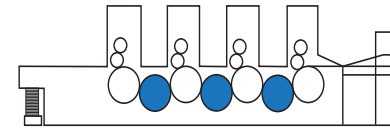
R/R = Rod to Rod

R/S = Rod to Snap

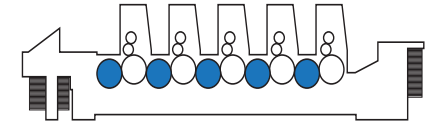
S/C = Snap to Clamp



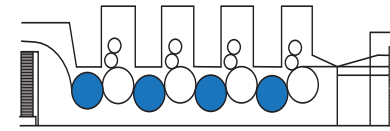
Komori Lithrone 20/26/28



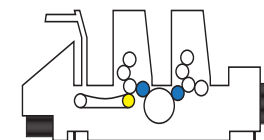
Komori Enthroner 29



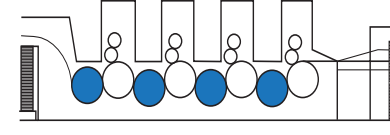
Komori Lithrone 32/40/44/50



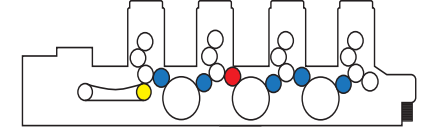
Komori Sprint 226/228



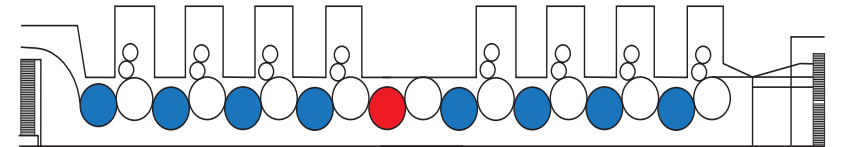
Komori LS 40



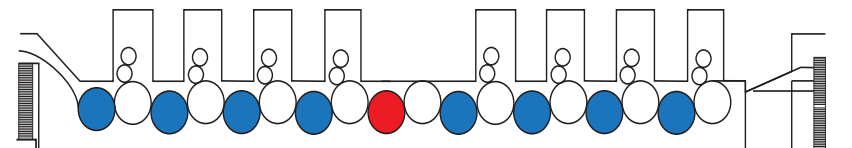
Komori Spica 26 / 29



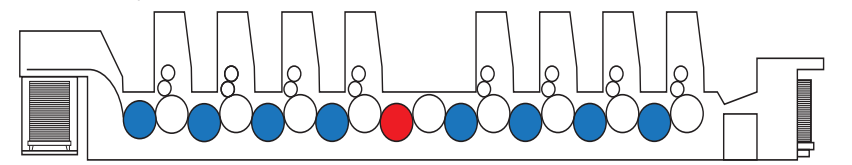
Komori LS 840 P



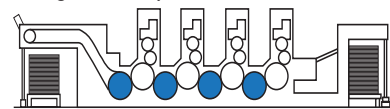
Komori GL 840 P



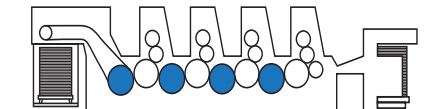
Komori LS 26 P / 29 P



Koenig & Bauer Rapida



Mitsubishi F-Series



● Transfer ● Delivery ● Perfector ● Double Transfer (Requires TWO Jackets per cylinder)



COMPETITIVE PRICING

AWARD WINNING TECHNOLOGY

FIRST CLASS CUSTOMER SERVICE



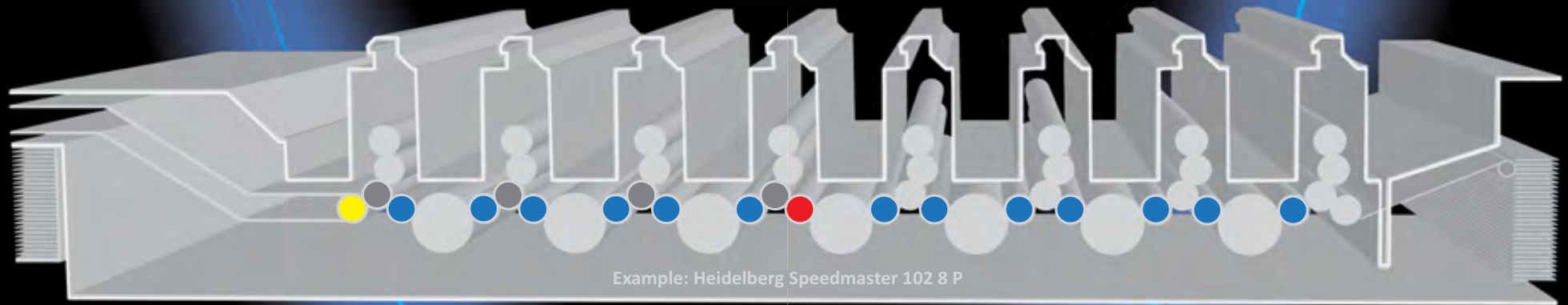
EXPERIENCED TECHNICAL SUPPORT

PERFORMANCE GUARANTEE

SUPERIOR QUALITY

WITH OUR PRODUCTS ON PRESS, YOU CAN PRESS ON™

FOLLOW US ON



Example: Heidelberg Speedmaster 102 8 P

● Impression ● Transfer ● Delivery ● Perfector

METAL/CERAMIC ●

PRI TITAN ICS & PRI REFINED ICS

Impression Cylinder Shells



GLASS BEAD ●●●

PRI Signature SERIES

PRI Originals™

SUPER SEE Smooth™ Super Smooth Glass Bead/Anti-Marking Cylinder Cover

BLUE GLASS® anti-marking films



NETS ●●●

PRI Signature SERIES

PRI Originals™

SUPER BLUE 2 LT® Pre-assembled, pre-adjusted Net & Base Cover Kits

SUPER BLUE 2 anti-marking, anti-static systems

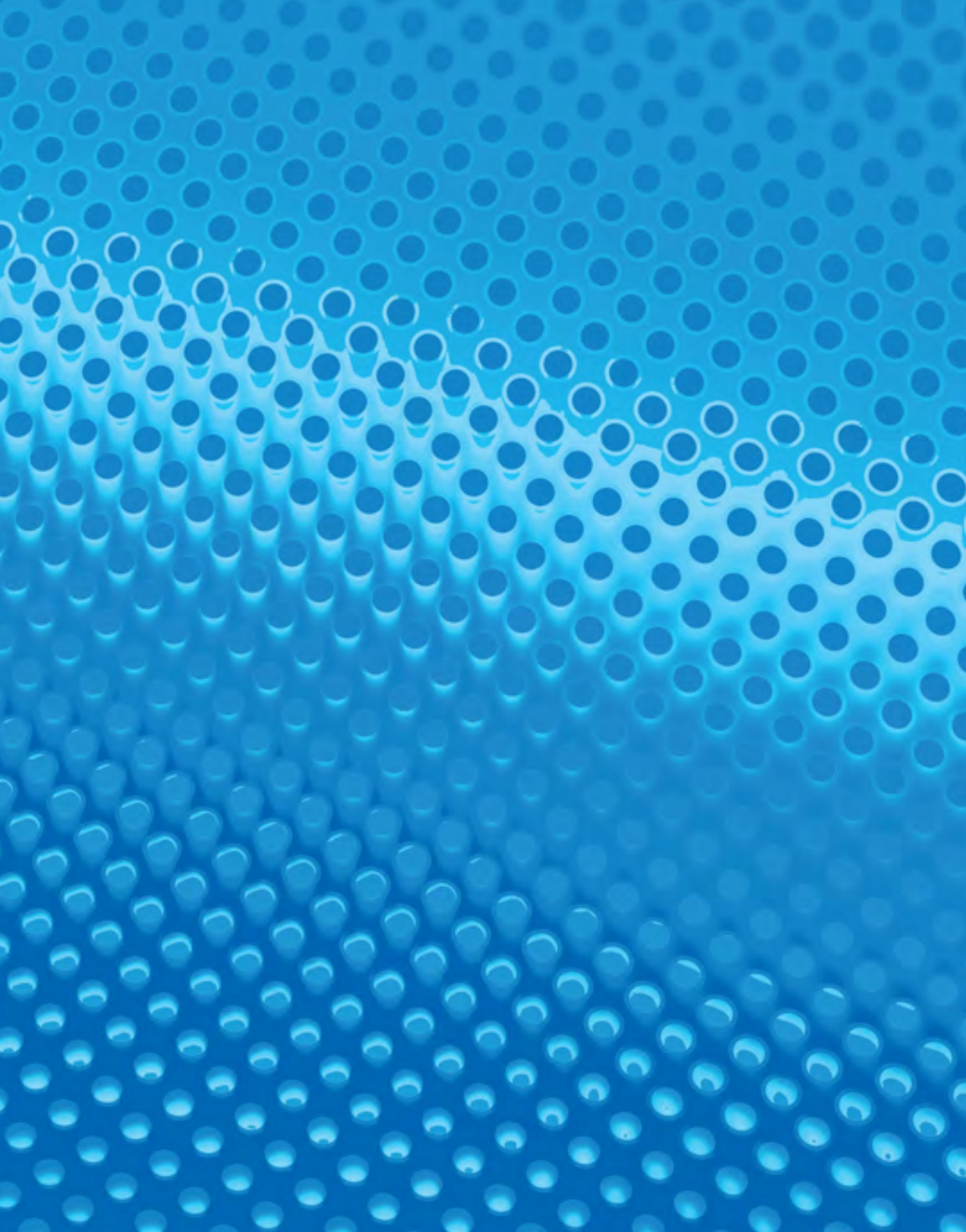
Original with Stripes

Flat StripeNet



Stretchable

Pre-stretched



PRINTING RESEARCH, INC.

10760 Shady Trail Suite 300, Dallas, Texas 75220 USA

214.353.9000 USA 800.627.5537

www.superblue.net www.printingresearch.com

info@superblue.net